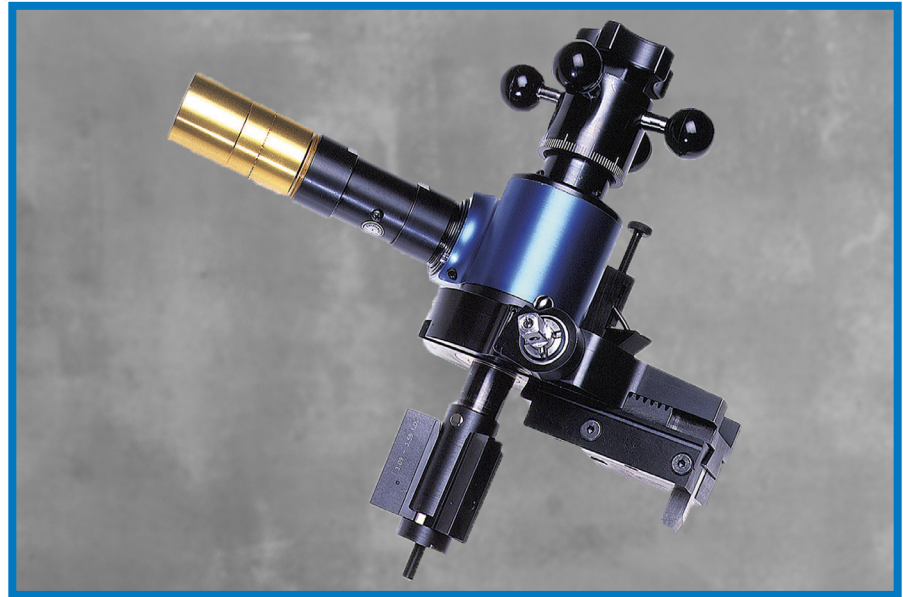


Compact, lightweight, and easy to set up.

Compact and Versatile

- Low profile machine is one of the most compact on the market today.
- Lightweight, weighing only 58 lbs (26.3 kg).
- Modular design and versatile setup allows the chuck and main body to be set up separately before placement in the bore.
- Machine raised and flat flanges.
- Bi-directional feed.
- Feed is reversible and infinitely variable for a surface finish of 63 – 500 RMS.
- Optional beveling head connects with “Quick-Lock” system, making changeover quick & easy.



Powerful, Quality Components

- 1.45 Hp (1.08 kW) motor allows typical material removal rate of 1 cubic inch (16.4 cm³) per minute.
- Pneumatic motor comes complete with filter, lubricator, and flow control.
- Features rugged main body, heavy-duty bearings, sealed lubrication, and rigid mounting system.

Cost Effective

- Cuts costs in four ways:
 - Reduces downtime.
 - Eliminates off-site machining costs
 - Eliminates leak sealing procedures.
 - Reduces stock of replacement flanges.
- Recoup the cost of a Climax Flange Facer in the first few flange facing jobs.

SPECIFICATIONS

	US	Metric
Flange Facing Diameter	3.0 - 19.0 inches	76.2 - 482.6 mm
Beveling Diameter (with optional beveling head)	3.0 - 12.75 inches	76.2 - 323.9 mm
Pipe Facing Diameter (with optional beveling head)	3.0 - 12.75 inches	76.2 - 323.9 mm
ID Mounting Diameter	3.0 - 12.7 inches	76.2 - 322.6 mm
Feed rate (reversible, variable)	0.002 to 0.040 inches/rev.	0.05 to 1.016 mm/rev.
Power, Pneumatic	1.45 Hp	1.08 kW
Power Requirement	48 scfm, 90 psi	1.36 m ³ /min, 621 kPa
Operating Weight		
With 19 inch (482.6 mm) facing head	66 lbs	29.9 kg
With 12 inch (304.8 mm) beveling head	60 lbs	27.2 kg
Shipping Weight	250 lbs	113.4 kg
Shipping Dimensions (2 containers)	33 x 21 x 11 inches	838 x 533 x 279 mm

Tool Configurations

Configure your FF4000 in 2 easy steps.

To configure your FF4000 Flange Facer:

- 1 Select a Base Package
- 2 Select a Facing Head

To configure the flange facer you require, simply select the option you need in each step, then contact your Climax representative.

1 Base Package

Main machine with 1.45 Hp (1.08 kW) 49593
pneumatic motor with air conditioning unit,
tooling, chuck, and chuck block set. Unit
comes packaged in a durable molded container.

2 Facing Head

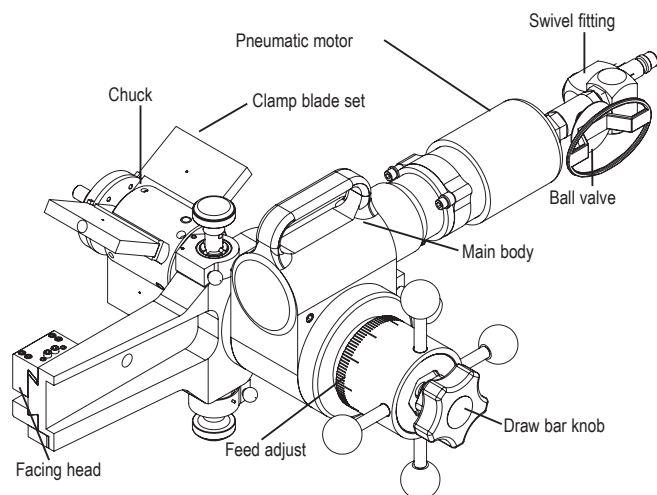
12 inch (304.8 mm) facing head 35222
19 inch (482.6 mm) facing head 34936
7 inch (177.8 mm) beveling head 34980
12.75 inch (323.9 mm) beveling head 35439

Optional Facing/Beveling Bits:

Facing bit 33141
Beveling bit 37.5 degrees 33136
Roughing tool bit 31867
Finishing tool bit 31858
5 degree chamfer tool bit 33315

Optional Facing/Beveling Heads:

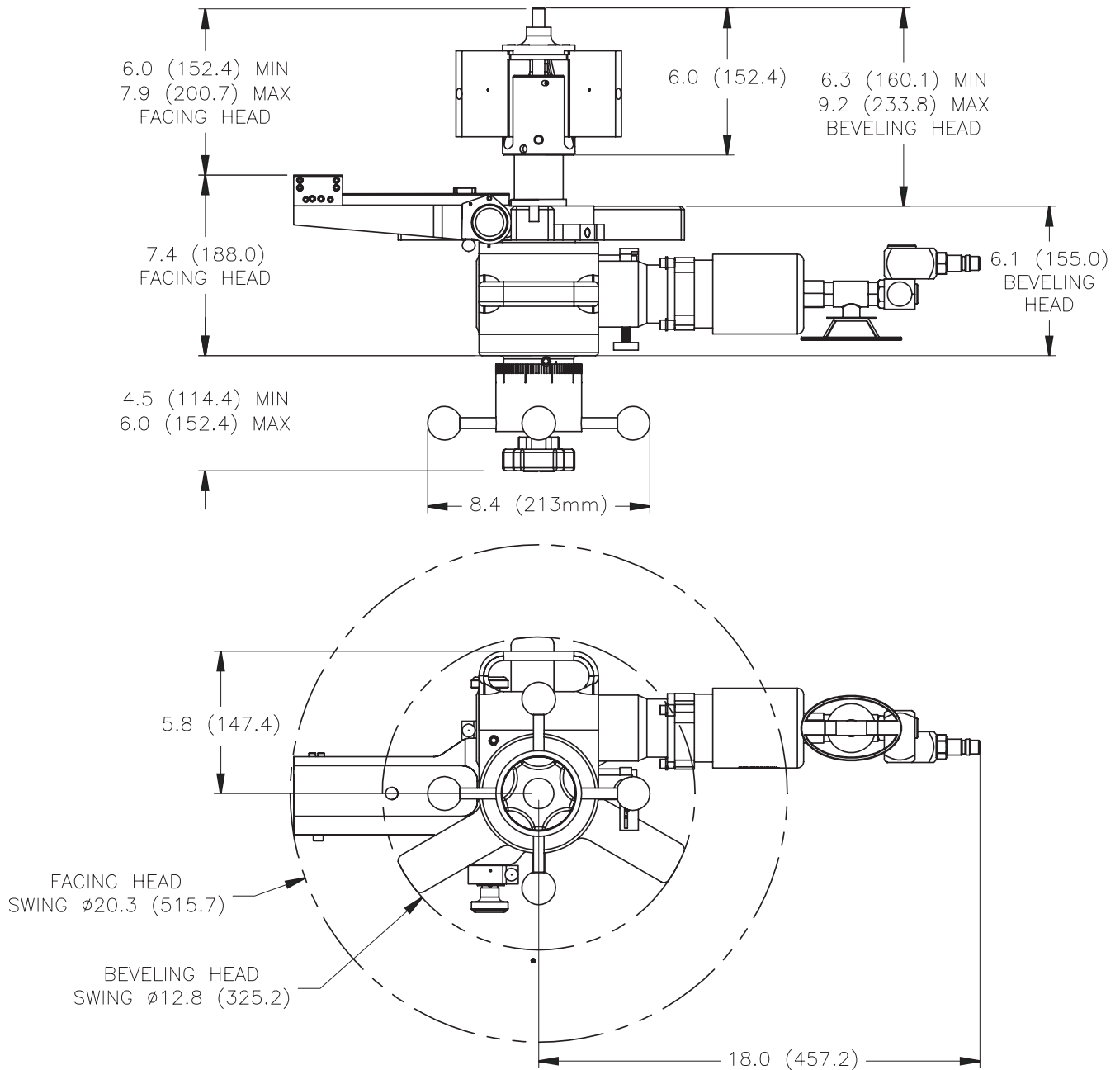
Beveling head 7 inches (177.8 mm) 34980
Beveling head 12.75 inches (323.9 mm) 35439
Facing head, 3 - 12 inch (76.2 -
304.8 mm) diameter 35222
Facing head, 3 - 19 inch (76.2 -
482.6 mm) diameter 34936



All dimensions should be considered reference. Contact your Climax Representative for precision dimensions. Specifications are subject to change without notice. There are no systems or components on this machine that are capable of producing hazardous EMC, UV or other radiation hazards. The machine does not use lasers nor does it create hazardous materials such as gasses or dust.

OPERATIONAL DIMENSIONS

Dimensions in inch (mm)



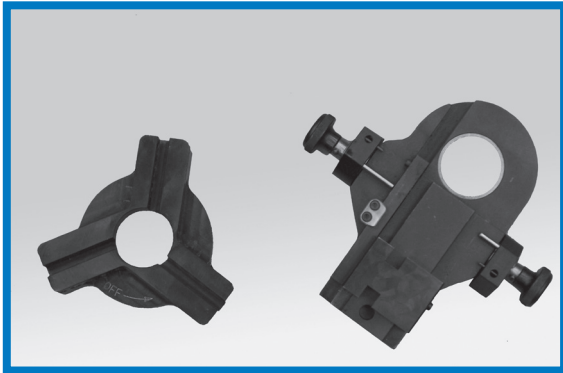
Note: Facing and Beveling heads shown for dimensional reference only.
They can not be mounted simultaneously.

SETUP AND OPERATION

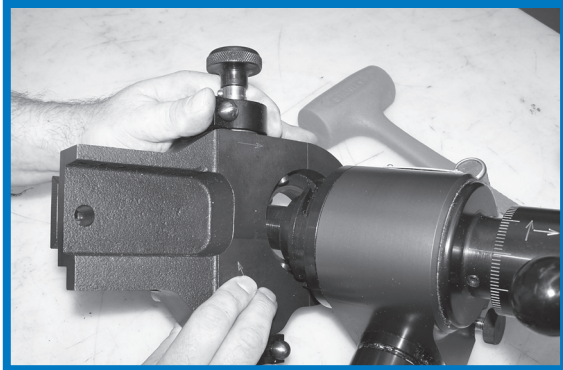
A Fast Five-Step Process

Setup of the FF4000 is quick and easy. The modular design and versatile setup options allows the chuck and main body to be set up separately. An experienced operator can set up the machine in 10 minutes or less.

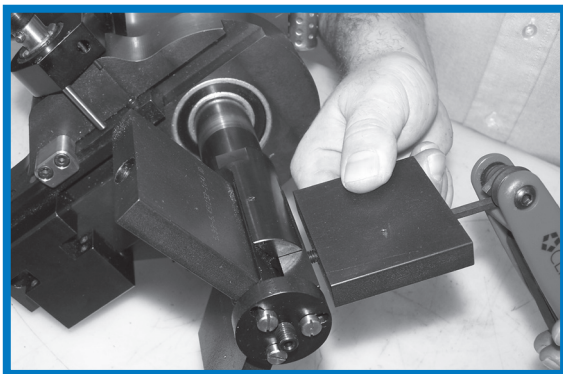
- 1** Choose from facing or beveling heads.
Place tool bit in tool slot and tighten set screw.



- 2** Align the 3 pin "Quick-Lock" system and tap with plastic mallet to seat.



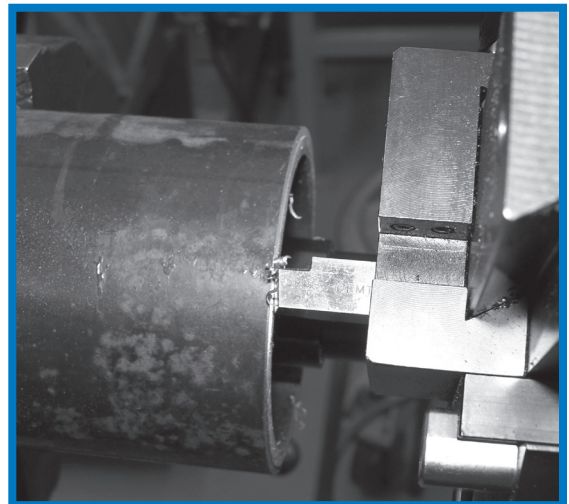
- 3** Select jaw set according to the ID diameter that the machine will chuck into.



- 4** Place the machine in the bore. Hold to good start height, and tighten hand nut to snug. Push down on hand nut. While holding nut down, turn rod handle to tighten chuck.



- 5** Set tool to desired cutting depth, and begin machining.



OEM PROFESSIONAL OPERATIONAL TRAINING



Backed by 60 Years of Experience

CLIMAX pioneered the concept of portable machine tools in 1964. Since that time, CLIMAX has grown to become the world's largest provider of innovative on-site machining solutions.

Professional, Experienced Instructors

All training programs are taught by experienced OEM CLIMAX trainers. Your instructor will provide valuable information on operator safety, tool set-up, mounting, and operation that will help you complete your on-site machining tasks quickly and to the highest quality standards.



Typical Courses Include:

- ✓ Operator safety
- ✓ Tool component review and setup
- ✓ Standard operational techniques
- ✓ Overview of cutting tools and recommend usage
- ✓ Maintenance procedures
- ✓ A certificate of achievement - issued to each student immediately following course completion

Sign up today for training at one of our **eight** Global CLIMAX training centers.

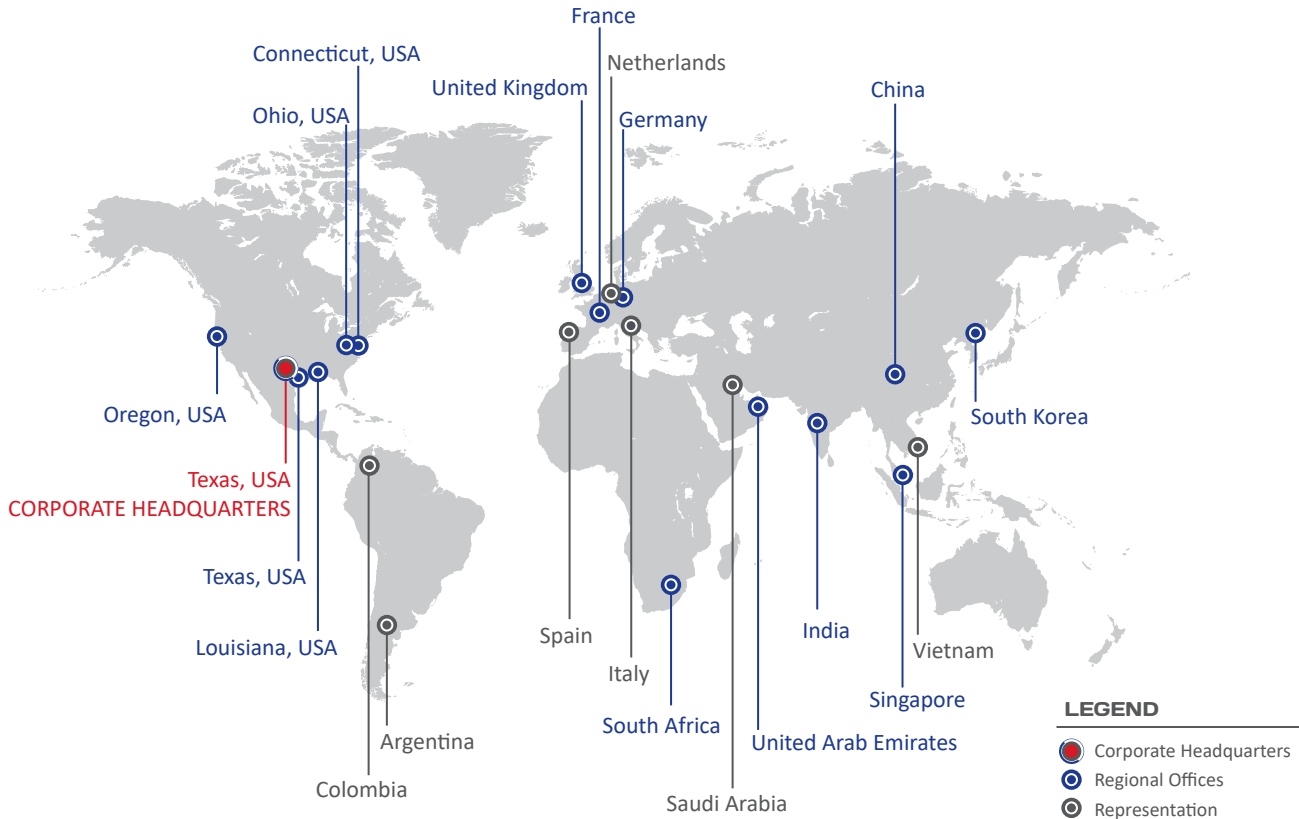
- Portland, Oregon
- Houston, Texas
- Baton Rouge, Louisiana
- Cleveland, Ohio
- Manchester, United Kingdom
- Düren, Germany
- Dubai, United Arab Emirates
- Dammam, Saudi Arabia



S.F.E. GROUP GLOBAL LOCATIONS



ESTABLISHED GLOBAL PRESENCE



Call CLIMAX for:

RENTALS

On selected models. With 20+ worldwide rental depot locations, you are never far away from CLIMAX.

OEM TRAINING

If you need training or on-site consultation, we're famous for it!

SPARES, REPAIR & MAINTENANCE

Call us for anything you need to keep your system running in top condition.

CUSTOM PROJECTS

Custom turn-key system design services from the most experienced engineers in the business!

Follow us on:   

CORPORATE HEADQUARTERS

Address: 4433 South Drive, Houston, Texas 77053, USA
Tel: +1 (713) 747 8502
Email: sales@sfe-brands.com

AMERICAS HEADQUARTERS

Address: 2712 E. 2nd St, Newberg, Oregon 97132, USA
Tel: +1 503 538 2185
Email: info@sfe-brands.com

INTERNATIONAL HEADQUARTERS

Address: 330B Route de Portes Les Valence, ZI les Bosses 26800 Etoile-sur-Rhône, France
Tel: + 33 (0) 475 575 070
Email: sales-int@sfe-brands.com

Copyright © 2024 S.F.E. GROUP All Rights Reserved. S.F.E. GROUP has taken reasonable measures to ensure the accuracy of the information contained in this document. However, S.F.E. GROUP makes no warranties or representations with respect to the information contained herein; and S.F.E. GROUP shall not be held liable for damages resulting from any errors or omissions herein, or from the use of the information contained in this document.

